

AIR CYLINDER

Series A16, A17

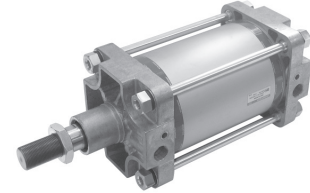
Cat No A16, A17 - 01 - 02 - A

AIR CYLINDERS Double Acting (Ø250 mm)

As per ISO 15552 / VDMA 24562 standards

Features

- Adjustable cushioning at both ends
- Wide varieties of mountings
- Low friction
- Long life



Technical Specifications

Cylinder bore Ø	(mm)	250
Cushion stroke	(mm)	50
Standard strokes *	(mm)	50 80 100 125 160 200 250 300 320 400 500
Medium		Compressed air - filtered - lubricated
Working pressure		0.5 - 10 bar
Medium temperature		5° - 60° C
Materials of construction		Aluminium, Brass, Nitrile, Steel, Acetal, Iron, polyurethane
Mountings		Basic cylinder, Foot mounting, Front flange, Rear flange, Male clevis, Female clevis, Centre trunnion, Front trunnion, Rear trunnion
Accessories		Clevis foot bracket, Wall mounting bracket, Trunnion bracket, Rod end fork, Rod end spherical eye

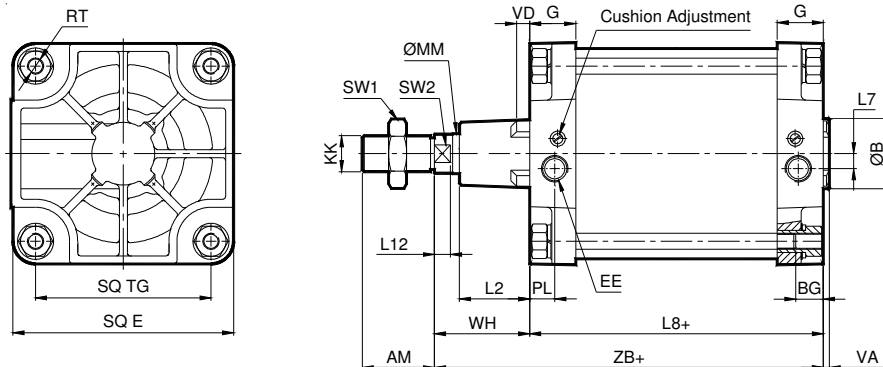
* For Non standard or longer stroke cylinders, contact your regional dealer or **JANATICS**

Output force (force in N : 1N = 0.1 kgf)

Cylinder bore (in mm)	Rod dia (in mm)		Working pressure in bar								
			2	3	4	5	6	7	8	9	10
Ø250	50	Extend	8836	13253	17671	22089	26507	30925	35343	39760	44178
		Retract	8482	12723	16964	21205	25446	29688	33929	38170	42411

(Above values have been worked out taking frictional loss into consideration)

Basic cylinder



+ Add stroke

Cylinder bore Ø	KK	AM	MM	SW2	L12	SW1	B e11	VD	VA	L2	E max	G	TG	RT	BG min	EE	PL	L7	WH ±2.2	ZB	L8	Stroke tol
250	M42 x 2	84	50	46	20	65	90	12	10	75	272	56	220	M20	25	G1	31	25	105	305 ± 2	200 ± 1.6	+5 0

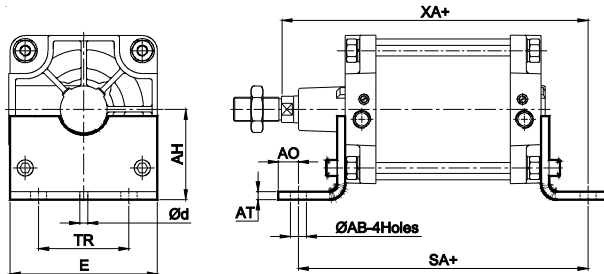
AIR CYLINDER

Series A16, A17

Cat No A16, A17 - 01 - 02 - A

MOUNTINGS FOR AIR CYLINDER Series A16, A17

Foot mounting

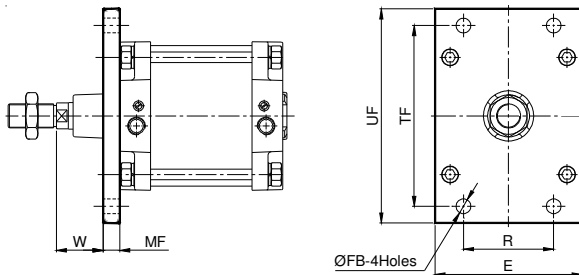


+ Add stroke

Cylinder bore Ø	TR ±0.3	AB H14	AH Js16	AO max	AT	E	SA ± 2	d*	XA ± 2
250	165	28	165	35	20	265	350	11.8	380

* Suitable for reaming

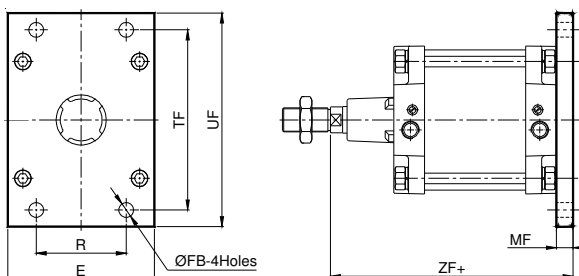
Front flange



+ Add stroke

Cylinder bore Ø	TF ± 0.7	R ± 0.5	FB H13	MF	UF	E	W ± 2.5
250	330	165	26	25	390	265	80

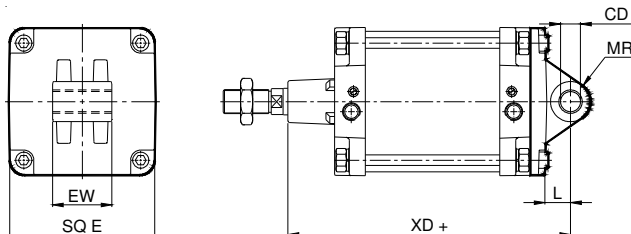
Rear flange



+ Add stroke

Cylinder bore Ø	TF ± 0.7	R ± 0.5	FB H13	MF	UF	E	ZF ± 2
250	330	165	26	25	390	265	330

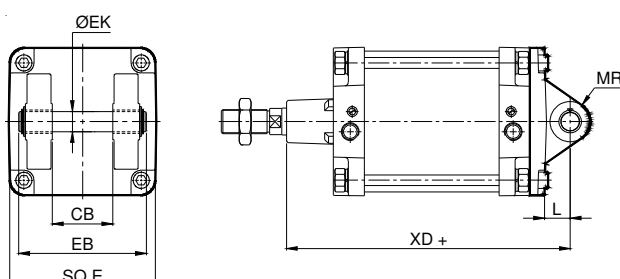
Male clevis



+ Add stroke

Cylinder bore Ø	CD H9	EW	tol	L min	MR max	E max	XD ± 2
250	40	110	- 0.5 - 1.2	45	41	270	375

Female clevis



+ Add stroke

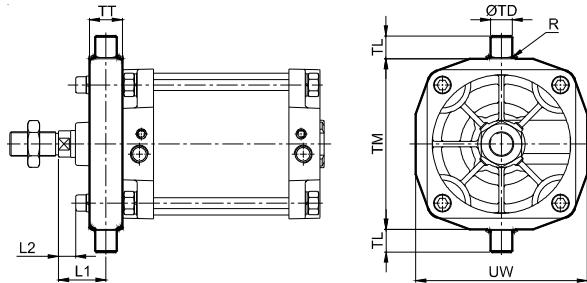
Cylinder bore Ø	EK e8	L min	MR max	EB max	CB H14	E max	XD ± 2
250	40	45	41	220	110	270	375

AIR CYLINDER

Series A16, A17

Cat No A16, A17 - 01 - 02 - A

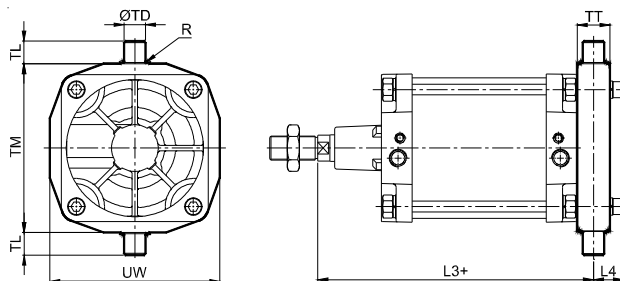
Front trunnion



+ Add stroke

Cylinder bore Ø	TD e9	TL h14	TM h14	UW	TT	R	L1 ± 2.5	L2 Approx.
250	40	40	320	318	60	3.2	75	21

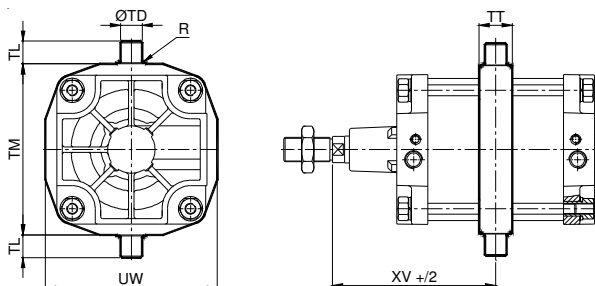
Rear trunnion



+ Add stroke

Cylinder bore Ø	TD e9	TL h14	TM h14	UW	TT	R	L3 ± 1.8	L4
250	40	40	320	318	60	3.2	335	54

Centre trunnion



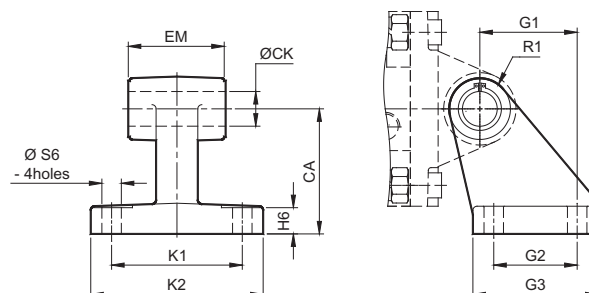
+ Add stroke

Cylinder bore Ø	TD e9	TL h14	TM h14	UW	TT	R	XV ± 2.5
250	40	40	320	318	60	3.2	205

Note : Cylinder with centre trunnion is factory fitted, please contact JANATICS - H.O

ACCESSORIES FOR AIR CYLINDER Series A16, A17

Clevis foot bracket



Cylinder bore Ø	K1 Js14	G2 Js14	S6 H13	CA Js15	CK H9	EM	tol	G1 Js14	H6	R1 max.	K2	G3	Ordering no. @
250	150	110	22	165	40	110	-0.5 -1.5	128	32	45	200	160	AA0250

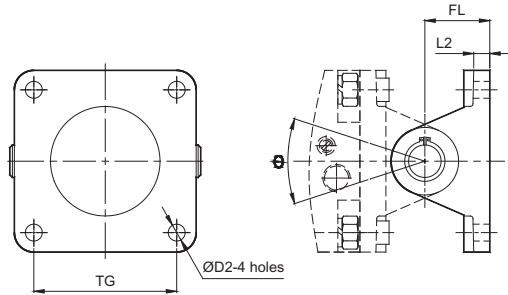
@ Adaptable to cylinder with female clevis

AIR CYLINDER

Series A16, A17

Cat No A16, A17 - 01 - 02 - A

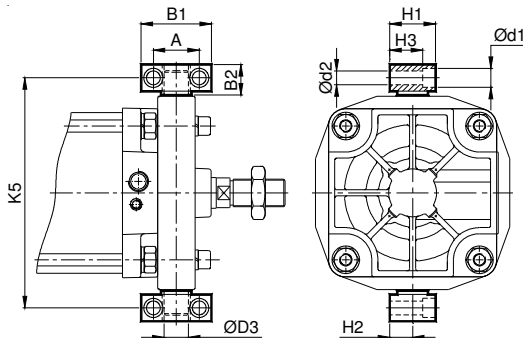
Wall mounting bracket



Cylinder bore Ø	TG	D2	L2	FL ± 0.2	θ°	Ordering no. @	Ordering no. #
250	220	22	11	70	80	AV0250	AW0250

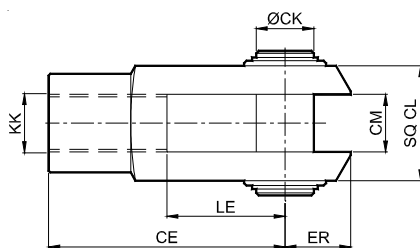
@ Adaptable to cylinder with male clevis
Adaptable to cylinder with female clevis

Trunnion bracket



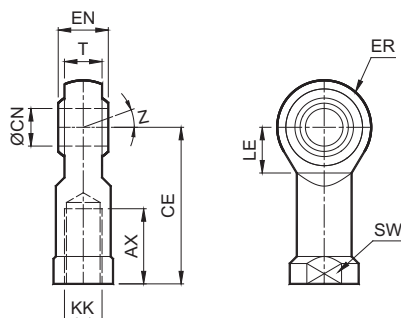
Cylinder bore Ø	B1	B2	A	d1	d2 H13	d3 H9	H1	H2	H3	K5	Ordering no.
250	140	50	90 ± 0.3	32	22	40	70	35 ± 0.2	48	375	AT0250

Rod end Fork (ISO 8140)



Cylinder bore Ø	KK	CE	CK f 8	CM B 12	LE	ER max.	CL	Ordering no.
250	M42 x 2	168	40	40	86	77	85	AF040

Rod end spherical eye (ISO 8139)



Cylinder bore Ø	KK	CN H9	T	EN h12	CE	LE min	ER max	AX	SW	Z	Ordering no.
250	M42 x 2	40	33	49	142	46	45	60	55	15°	AP040

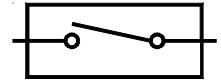
AIR CYLINDER

Series A17

Cat No A16, A17 - 01 - 02 - A

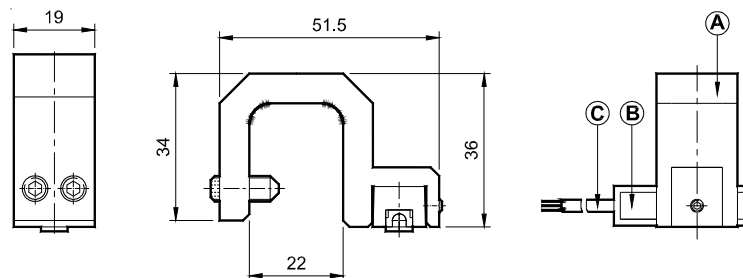
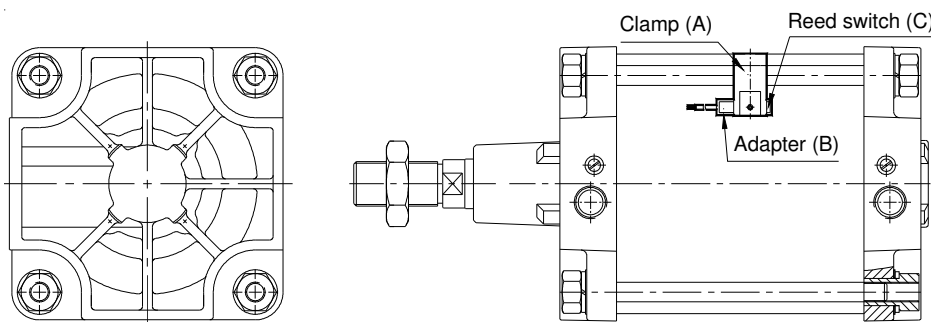
ACCESSORIES FOR MAGNETIC CYLINDERS Series A17

REED SWITCH



Function

The reed switch and clamping kit assembly is mounted on the Air cylinder (Series A17) for proximity sensing. The piston of the cylinder is equipped with a permanent magnet which activates the reed switch on approaching it. The reed switch closes the circuit giving an electrical signal, which could be used further as required. The accuracy of the sensing distance depends on the speed of operation of the piston.



How to order

AM1 ○ ○ ○ - ○ ○ - ○ - ○ ○

Cylinder bore		Clamp Model no.*		Adapter Model no.*		Reed Switch Model no. *	
250	- Ø250	07	SA0067	1	A1M01	01	AM40-0-FL-04 (Reed switch 2 wire type)
						02	AM40-1-FL-04 (Reed switch 3 wire type)
						03	AM40-2-FL-04 (Solid state type, Current sourcing - PNP)
						04	AM40-3-FL-04 (Solid state type, Current sinking - NPN)
						51	AM40-0-QD-04 (Reed switch 2 wire type)
						52	AM40-1-QD-04 (Reed switch 3 wire type)
						53	AM40-2-QD-04 (Solid state type, Current sourcing - PNP)
						54	AM40-3-QD-04 (Solid state type, Current sinking - NPN)

Note:- Further details of reed switch, refer catalogue series AM4 - page no 1a.1.1

Ordering example:- Ø250 cylinder reed switch Clamp, Adapter and Reed switch ordering no.: **AM1250-01-1-01**
* Separate clamp ordering no.: **SA0067**, Adapter ordering no.: **A1M01**,
Reed switch ordering no.: **AM40-0-FL-04**

AIR CYLINDER

Series A16, A17

Cat No A16, A17 - 01 - 02 - A

How to order

A

Model	
16	Standard cylinder
17	Magnetic cylinder

Cylinder bore (mm)	
250	- Ø 250

Stroke (mm)	
050	- 50
080	- 80
100	- 100
125	- 125
160	- 160
200	- 200
250	- 250
300	- 300
320	- 320
400	- 400
500	- 500

Mountings	
O	- Basic
L	- Foot Mounting
F	- Front Flange
R	- Rear Flange
S	- Male Clevis
D	- Female Clevis
N	- Front Trunnion
M	- Rear Trunnion
T	- Center Trunnion

Example :

Ordering no. for cylinder with 250 dia bore, 100 mm stroke with female clevis mounting : **A16 250 100 D**

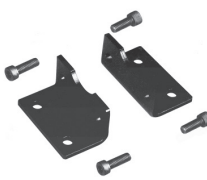

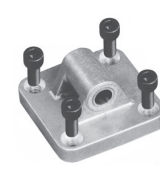
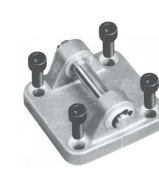

Note :

If ordered as 250 dia, 100 mm stroke cylinder, Basic cylinder **A16 250 100 O** will be supplied.

For repeat order when the details are taken from cylinder nameplate, mention the mounting style separately.

For ordering **Accessories** refer corresponding tables for ordering numbers.

For ordering individual **Mounting** kits (If needed separately) the order numbers are as below

Cylinder bore Ø	Foot mounting	Front / Rear flange	Male clevis	Female clevis	Front / Rear trunnion
					
250	ML0250	MF0250	MS0250	MD0250	MT0250

For your special requirements of cylinders or for further informations contact your regional dealer or **JANATICS**