

COMPACT VALVE - 1/4

Series DS5

Cat No DS5 - 01 - 02 - B

COMPACT VALVE - G1/4

Features

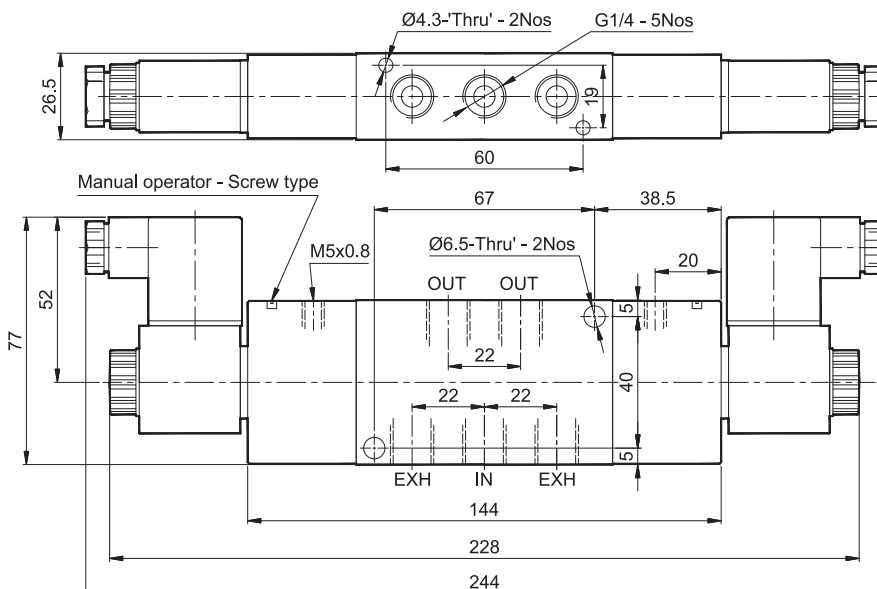
- Mounting provision for individual unit
- Compact size
- Manual override
- Wide range of coil voltages
- Suitable for manifold mounting (M004...series)

Technical Specifications

Model	DS5
Type	5/2
Design	Spool type
Port Size	Inlet, Outlet, Exhaust - G1/4 Pilot (14, 12) - M5
Medium	Compressed air filtered, lubricated
Working Pressure range	2 to 10 bar
External Pilot Pressure range	2 to 10 bar
Recommended oil for lubrication	ISO VG32 (Servo system 32)
Ambient temperature	-10° to +60° C
Medium temperature	+5° to +50° C
Nominal Flow @	1100 lts/min
Materials of construction	Aluminium, Nitrile, Brass, Acetal, PBT, Zinc, Steel
Electrical	
Coil width	22 mm
Voltage (V) ± 10%	AC (50 Hz) - 24, 48, 110, 220
	DC - 12, 24, 48, 110
Power consumption	AC - 6 VA, DC - 5 W
Duty cycle	Continuous
Class of insulation	Class F
Type of coil protection	IP65
Cable entry (PG9)	Suitable for Ø6 to Ø8 OD Cable (2wire / 3wire)

@ Inlet pressure 6 bar, and pressure drop 1 bar

5/2 Double external solenoid pilot valve



1 - Inlet, 2,4 - Outlet, 3,5 - Exhaust, 14, 12 - Pilot

Ordering No*	DS555TT61
Symbol	

* For ordering no., voltage to be added.

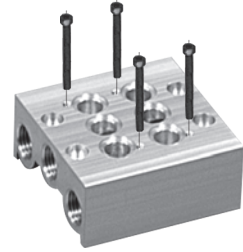
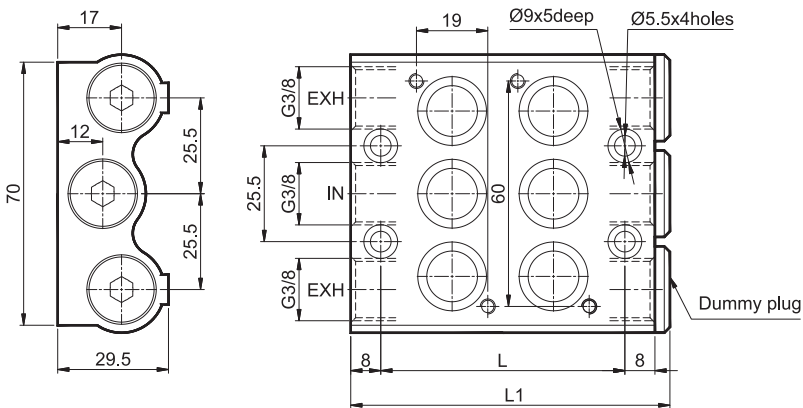
COMPACT VALVE - 1/4

Series DS5

Cat No DS5 - 01 - 02 - B

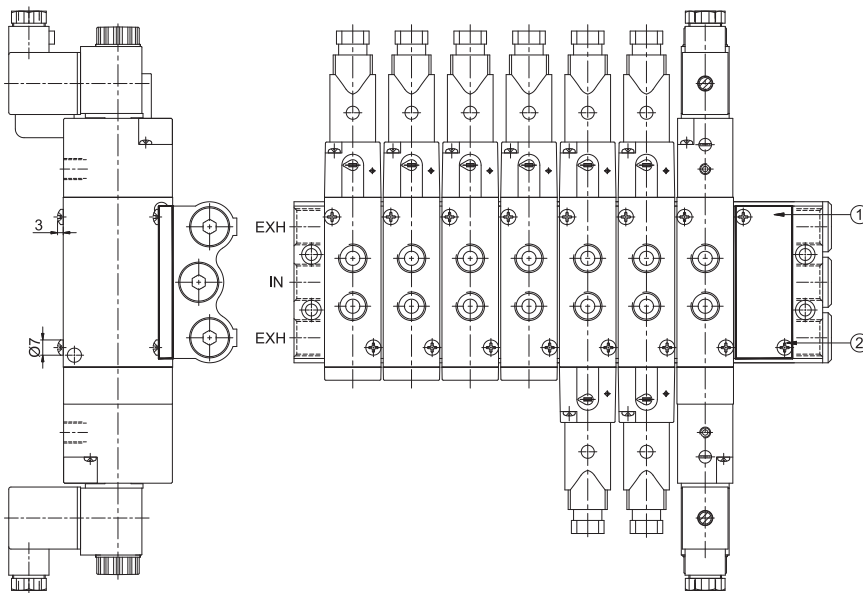
MANIFOLDS FOR COMPACT VALVE

Manifold - Type M005 (for 5/2, 5/3 valves)



For mounting	L	L1	Ordering No
2 valves	65	85	M0050202
4 valves	119	139	M0050204
6 valves	173	193	M0050206
8 valves	227	247	M0050208

Cover plate assembly for Manifold Type M005



Sl. No.	Item	Qty.	Ordering No
1	Cover plate	1	A4C21
2	Screw - M4X0.7	2	

Application:

The cover plate assembly can be used to plug the unutilised position in a manifold. For eg., if it is required to mount only 7 valves on manifold no. M0050208, the eighth position can be plugged and made dummy using a cover plate assembly. (refer picture above)

COMPACT VALVE - 1/4

Series DS5

Cat No DS5 - 01 - 02 - B

How to order

1. Solenoid valve + “Connectors without LED”

While ordering Solenoid operated valves, please mention the suffix given below along with the model number to indicate the required voltage

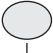

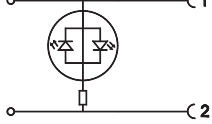
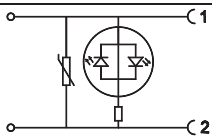
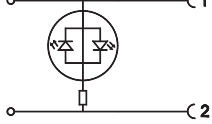
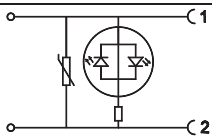
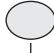
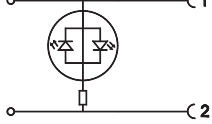
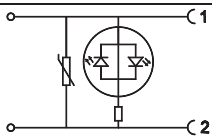
A 220V AC	Q 110V DC
B 110V AC	S 48V DC
D 48V AC	W 24V DC
G 24V AC	R 12V DC

Example

- a. The ordering no. for 5/2 Double external solenoid pilot valve, 24V D.C coil with PG cable is **DS555TT61-W**
- b. The ordering no. for 5/2 Double external solenoid pilot valve, 24V D.C coil with Moulded cable is **DS555TT61-W1**

2. Solenoid valve + “Connectors with LED”

While ordering Solenoid operated valves with LED connectors, given below in the corresponding tables.

 <table border="1" style="width: 100%; border-collapse: collapse;"> <thead> <tr> <th colspan="2">Voltage</th> </tr> </thead> <tbody> <tr> <td>A</td> <td>220V AC</td> </tr> <tr> <td>G</td> <td>24V AC</td> </tr> <tr> <td>W</td> <td>24V DC</td> </tr> </tbody> </table>	Voltage		A	220V AC	G	24V AC	W	24V DC	 <table border="1" style="width: 100%; border-collapse: collapse;"> <thead> <tr> <th colspan="2">Housing Colour & Indication</th> </tr> </thead> <tbody> <tr> <td style="width: 10%;">T0</td> <td>  Transparent housing with Bipolar LED indicator confirming supply voltage </td> </tr> <tr> <td>T1</td> <td>  Transparent housing with Bipolar LED indicator confirming supply voltage plus varistor to give over voltage protection to the source and load </td> </tr> </tbody> </table>	Housing Colour & Indication		T0	 Transparent housing with Bipolar LED indicator confirming supply voltage	T1	 Transparent housing with Bipolar LED indicator confirming supply voltage plus varistor to give over voltage protection to the source and load	<p>R</p> <table border="1" style="width: 100%; border-collapse: collapse;"> <thead> <tr> <th colspan="2">LED colour</th> </tr> </thead> <tbody> <tr> <td>R</td> <td>Red</td> </tr> </tbody> </table>	LED colour		R	Red	 <table border="1" style="width: 100%; border-collapse: collapse;"> <thead> <tr> <th colspan="2">Connection type</th> </tr> </thead> <tbody> <tr> <td style="width: 10%;">0</td> <td>PG Cable entry</td> </tr> <tr> <td>1</td> <td>Moulded cable (with 2metre length)</td> </tr> </tbody> </table>	Connection type		0	PG Cable entry	1	Moulded cable (with 2metre length)
Voltage																											
A	220V AC																										
G	24V AC																										
W	24V DC																										
Housing Colour & Indication																											
T0	 Transparent housing with Bipolar LED indicator confirming supply voltage																										
T1	 Transparent housing with Bipolar LED indicator confirming supply voltage plus varistor to give over voltage protection to the source and load																										
LED colour																											
R	Red																										
Connection type																											
0	PG Cable entry																										
1	Moulded cable (with 2metre length)																										

Example

The Ordering no for 5/2 Double external solenoid pilot valve (1/4"), 24V DC, connectors with LED of Transparent colour housing with Bipolar LED and varistor, Red colour LED with moulded cable: **DS555TT61-WT1R1**

Coil spare ordering no.

Coil (without connector)	Ordering no.	
	AC	DC
220	AC23A	- NA -
110	AC23B	DC24Q
48	AC23D	DC24S
24	AC23G	DC24W
12	- NA -	DC24R