

AIR CYLINDER

Series A53, A54

Cat No A53, A54 - 01 - 01 - B

AIR CYLINDERS Double Acting Double End (Ø12 - 25 mm)

As per ISO 6432 / CETOP RP52P standards

Features

- Elastomer cushioning at both ends
- Wide varieties of mountings
- Low friction
- Long life



Technical Specifications

Bore dia (mm)	12	16	20	25
Standard strokes * (mm)	10 25 40 50 80 100 125 160 200 250 300			
Medium	Compressed air - filtered - lubricated			
Working pressure	0.5 to 10 bar			
Ambient temperature	-10° to +60° C			
Medium temperature	+5° to +50° C			
Materials of construction	Aluminium, Brass, Nitrile, Polyurethane, Steel, Acetal			
Mountings	Double foot mounting, Flange, Trunnion			
Accessories	Trunnion bracket, Rod end fork, Rod end aligner, Rod end spherical eye			

* For Non standard or longer stroke cylinders, contact your regional dealer or **JANATICS**

Output force (force in N : 1N = 0.1 kgf)

Bore dia (in mm)	Rod dia (in mm)	Working pressure in bar								
		2	3	4	5	6	7	8	9	10
12	6	15	22	30	38	46	53	61	68	76
16	6	31	46	62	78	94	108	124	140	156
20	8	47	71	95	118	142	166	189	214	237
25	10	74	111	148	185	222	260	296	334	371

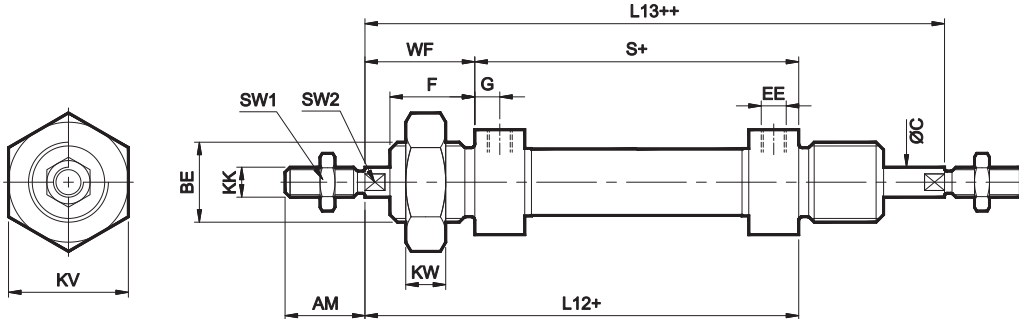
(Above values have been worked out taking frictional loss into consideration)

AIR CYLINDER

Series A53, A54

Cat No A53, A54 - 01 - 01 - B

Basic cylinder

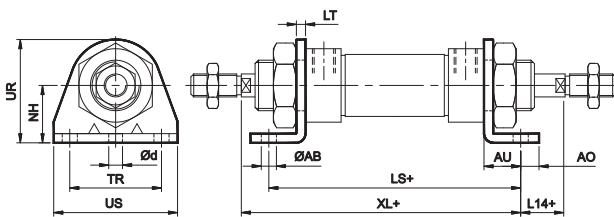


+ Add stroke
++ Add twice stroke

Bore Dia	BE	F	G	EE	S	tol	KW	C	SW1	SW2	KK	AM	WF ±1.2	L12 ±1.5	KV	L13 ±1.5	Stroke tol	
																	10 - 100	125 - 300
12	M16 X 1.5	17	6	M5 X 0.8	51	± 0.5	8	6	10	5	M6 X 1	16	22	73	24	96	+ 1.5 + 0	+ 2.5 + 0
16	M16 X 1.5	17	6	M5 X 0.8	58	± 0.5	8	6	10	5	M6 X 1	16	22	80	24	103		
20	M22 X 1.5	20	8	G 1/8	67	± 0.7	10	8	13	7	M8 X 1.25	20	24	91	32	116		
25	M22 X 1.5	22	8	G 1/8	71	± 0.7	10	10	17	9	M10 X 1.25	22	28	99	32	128		

MOUNTINGS FOR AIR CYLINDER Series A53, A54

Double Foot Mounting

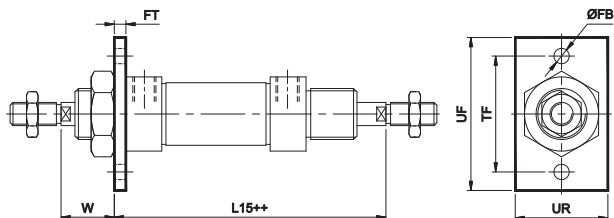


+ Add stroke

Bore Dia	UR	AB H13	TR Js14	NH ±0.3	AO	AU	d*	LT	US	LS	XL ±1	L14 ±1.3	Ordering No
12	33	5.5	32	20	6	12	4.8	2	42	75 ^{±0.7}	85	11	MS016
16	33	5.5	32	20	6	12	4.8	2	42	82 ^{±0.7}	92	11	MS016
20	45	6.6	40	25	8	16	5.8	4	54	99 ^{±0.9}	107	9	MS022
25	45	6.6	40	25	8	16	5.8	4	54	103 ^{±0.9}	115	13	MS022

* Suitable for reaming

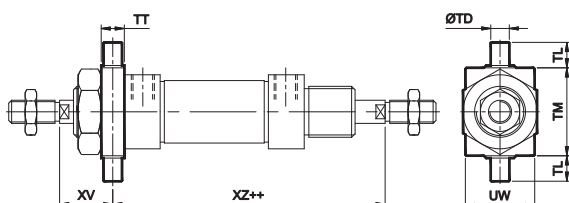
Flange



++ Add twice stroke

Bore dia	TF Js14	UF	UR	FB H13	FT	L15 ±1.2	W ±1.4	Ordering No
12	40	50	30	5.5	4	78	18	MF016
16	40	50	30	5.5	4	85	18	MF016
20	50	66	40	6.6	5	97	19	MF022
25	50	66	40	6.6	5	105	23	MF022

Trunnion



++ Add twice stroke

Bore dia	TM h14	UW	TD e9	TT	TL h14	XZ ±1.2	XV ±1.4	Ordering No
12	30	25	6	8	10	78	18	MT016
16	30	25	6	8	10	85	18	MT016
20	40	30	8	10	10	97	19	MT022
25	40	30	8	10	10	105	23	MT022

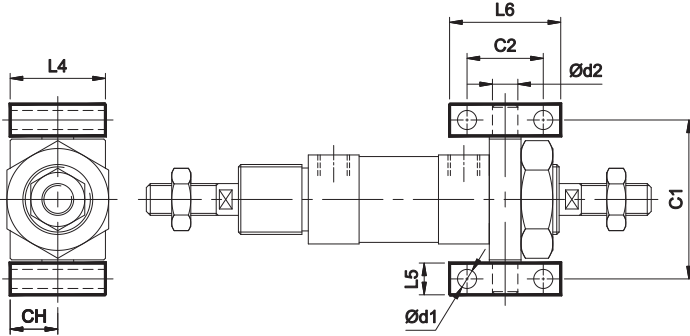
AIR CYLINDER

Series A53, A54

Cat No A53, A54 - 01 - 01 - B

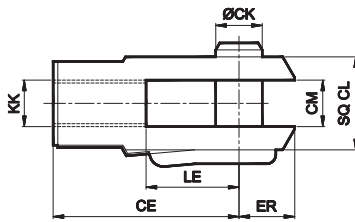
ACCESSORIES FOR AIR CYLINDER Series A53, A54

Trunnion bracket



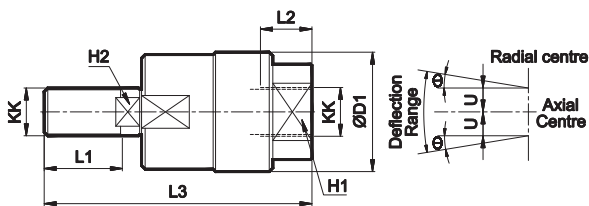
Bore dia	C1	C2 Js14	d1 H13	L4	L5	L6	CH	d2 H9	Ordering no.
12	38	20	4.3	25	8	30	16	6	AT016
16	38	20	4.3	25	8	30	16	6	AT016
20	50	24	6.6	30	10	35	20	8	AT022
25	50	24	6.6	30	10	35	20	8	AT022

Rod end Fork (ISO 8140)



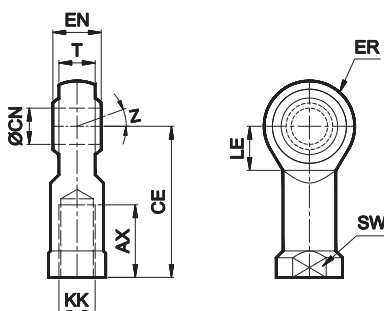
Bore dia	KK	LE	CM B12	CE	CK f8	CL	ER	Ordering no.
12	M6X1	12	6	24	6	12	9.5	AF006
16	M6X1	12	6	24	6	12	9.5	AF006
20	M8X1.25	16	8	32	8	16	13	AF008
25	M10X1.25	20	10	40	10	20	16	AF010

Rod end Aligner



Bore dia	KK	L1	L2	L3	D1	H1	H2	± 0°	U	Ordering no.
12 / 16	M6X1	12	8	38	18	10	4	5	0.75	AR006
20	M8X1.25	15	10	48	20	12	7	5	0.75	AR008
25	M10X1.25	20	14	65	28	17	8	5	0.75	AR010

Rod end spherical eye



Bore dia	KK	CN H9	T	EN h12	CE	LE min	ER max	AX	SW h13	Z	Ordering no.
12 / 16	M6X1	6	6.75	9	30	11	10	12	11		AP006
20	M8X1.25	8	9	12	36	13	12	16	13 / 14	13°	AP008
25	M10X1.25	10	10.5	14	43	15	14	20	17		AP010

AIR CYLINDER

Series A53, A54

Cat No A53, A54 - 01 - 01 - B

How to order

A		54		016		050		D	
Model		Bore Ø (mm)		Stroke (mm)		Mountings			
53	Magnetic cylinder	012	- Ø 12	010	- 10	O	- Basic		
54	Standard cylinder	016	- Ø 16	025	- 25	D	- Double Foot Mounting		
		020	- Ø 20	040	- 40	F	- Flange		
		025	- Ø 25	050	- 50	M	- Trunnion		
				080	- 80				
				100	- 100				
				125	- 125				
				160	- 160				
				200	- 200				
				250	- 250				
				300	- 300				

For details of accessories for magnetic cylinders refer Product Catalogue **Series A51, A52 (Page no. 1.7.5)**

Example:

Ordering no. for standard cylinder with 16 dia bore, 50 mm stroke with Double foot mounting : **A54 016 050 D**


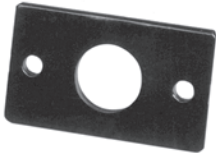
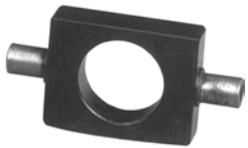
Note:

If ordered as 16 dia, 50 mm stroke cylinder, Basic cylinder **A54 016 050 O** will be supplied.

For repeat order when the details are taken from cylinder nameplate, mention the mounting style separately.

For ordering **Accessories**: mention part numbers in corresponding tables.

For ordering individual **Mounting** kits (If needed separately): mention the ordering numbers as below

Cylinder bore Ø	Double Foot mounting	Flange (Front or Rear)	Trunnion (Front or Rear)
			
12	MS016	MF016	MT016
16	MS016	MF016	MT016
20	MS022	MF022	MT022
25	MS022	MF022	MT022

For your special requirements of cylinders or for further informations contact your regional dealer or **JANATICS**