

INLINE SLIDE VALVE

Series GS1

Cat No GS1 - 01

IN LINE SLIDE VALVE - R1/8, R1/4, R3/8, R1/2, R3/4

Features

- Inline mounted
- Sleeve type, saves space
- Smooth, easy operation



Application

These valves can be used at the inlet of pneumatic tools like screwdriver, grinder etc., pneumatic systems and near machineries using pneumatic systems, for quick and convenient connecting - disconnecting of compressed air.

Technical Specifications

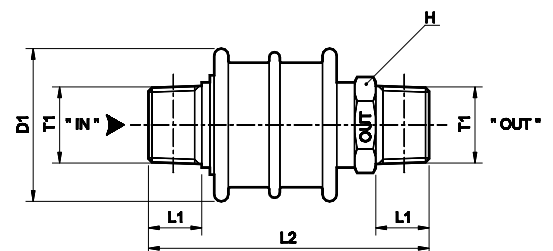
Ordering No	GS150	GS151	GS152	GS153	GS154
Size	R1/8	R1/4	R3/8	R1/2	R3/4
Medium	Compressed air, filtered				
Maximum working pressure	10 bar				
Ambient / Medium temperature	5° - 60° C				
Materials of construction	Brass, Aluminium, Nitrile				
NW mm	5	7	11	13	20
Flow rate lts/min [@]	500	1000	2800	4500	10000
Weight Kg	0.088	0.090	0.224	0.249	0.370

@ Inlet pressure 6 bar, and pressure drop 1 bar

Operation

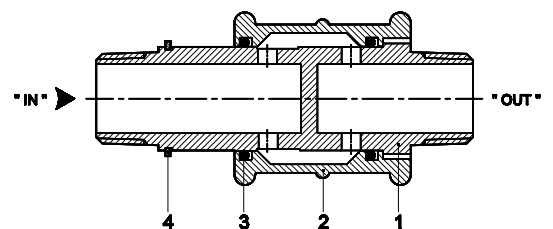
Moving the sleeve towards " OUT ", connects the air line to the system and moving the sleeve in the opposite direction, will close the inlet port and exhaust the down stream air.

Ordering No	T1	D1	L1	L2	H (A/F)
GS150	R1/8	31	8	57	17
GS151	R1/4	31	11	63	17
GS152	R3/8	43	12	74	27
GS153	R1/2	43	15	92	27
GS154	R3/4	50	18	109	32



Spare parts list

Ref. no.	No. off	Part Name	Ordering no. for				
			GS150	GS151	GS152	GS153	GS154
1	1	Housing	-	-	-	-	-
2	1	Sleeve	-	-	-	-	-
3	2	'O' ring	650114	650114	650302	650302	650303
4	1	Circlip	-	-	-	-	-



Precautions

1. Note the direction of flow before installation and connect piping accordingly.
2. Flush pipings for dirt, dust, rust and other foreign particles.
3. Install in clean atmosphere.
4. Use teflon tape on taper threads. Ensure teflon tape does not enter the unit during tightening.

Subject to change