

SHUT OFF VALVE

Series GS3

Cat No GS3 - 01 - 02

SHUT OFF VALVE (Hand lever operated ball valves) - G1/4, 3/8, 1/2, 3/4, 1, 1¼, 1½, 2

Features

- Ball type
- In line mounting
- Easy and smooth operation
- Assembly on rigid pipe system
- Maintenance free
- Bubble tight sealing



Application

Ball valves can be used in all compressed air applications. Some of the pneumatic applications include,

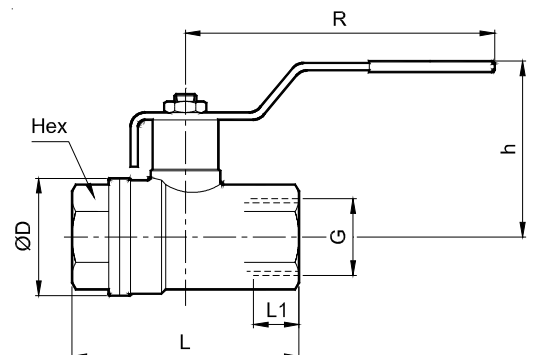
- All compressed airlines
- Pneumatic circuits in industry
- Pneumatic control panels
- Machine tools
- Pneumatic systems of machinery

Technical Specification

Port size	G1/4	G3/8	G1/2	G3/4	G1	G1¼	G1½	G2
Medium *	Compressed air, lubricated / Non lubricated							
Max. working pressure	10 bar							
Ambient / Medium Temperature	5° - 60° C							
Materials of construction	Brass, NBR, PTFE, Steel							
NW (mm)	8	10	15	20	25	32	40	50
Flow rate lts/min	5900	6600	17900	32400	47300	97900	253000	291500
Weight (kg)	0.15	0.13	0.16	0.27	0.40	0.66	0.95	1.58

* Medium - for other medium requirements, please contact factory

Port size G	Hex	L1	h	L	R	ØD	Ordering No
1/4	20	11	44.5	51.5	98	23	GS3208H61
3/8	20	11.4	44.5	51.5	98	23	GS3209H62
1/2	25	10	40	47.5	84.5	30	GS3210H63
3/4	31	10	52.5	53	110	36	GS3211H64
1	38	12.5	62.5	65.5	110	43.5	GS3212H65
1¼	48	14	68.5	76.5	140	53	GS3213H66
1½	54	16	73.5	89	140	65	GS3214H67
2	67	17	85	103	170	80	GS3215H68



Precautions

1. Note the direction of flow before installation & connect piping accordingly
2. Flush piping for dirt, rust and other foreign particles
3. Install in clean atmosphere

How to Order

While ordering Shut off valve, mention the ordering number given in the corresponding tables. Subject to change